



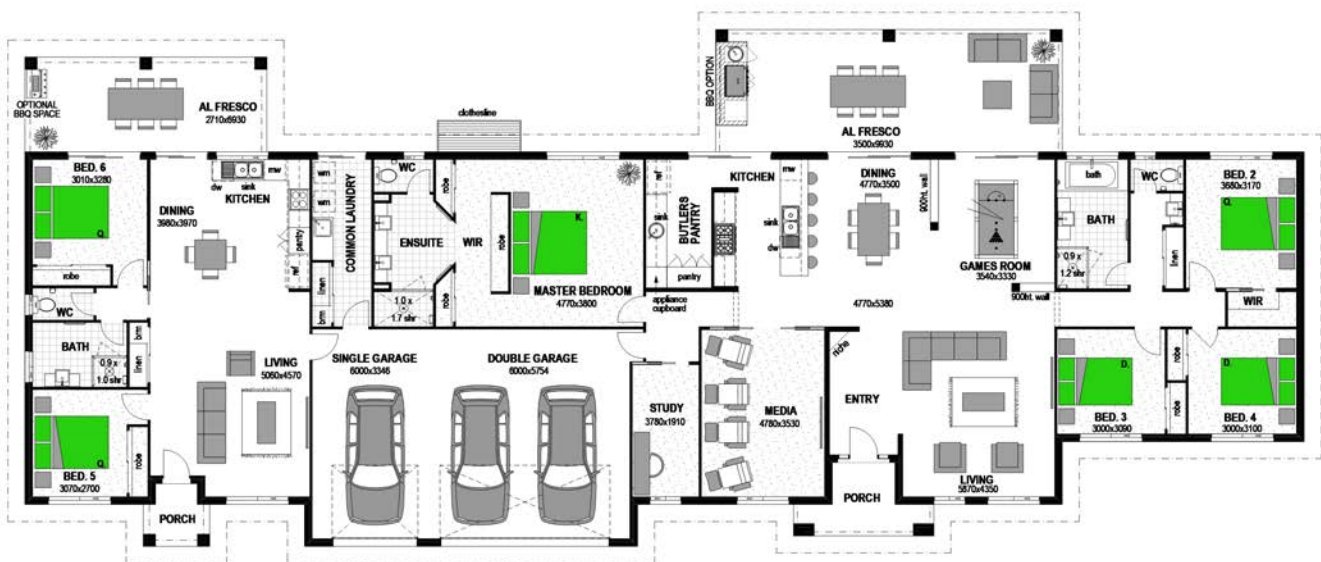
6 BED - 3 BATH - 3 CAR - 2 LIVING - MEDIA - STUDY - GAMES ROOM

MOUNTAIN FACADE

KORU 428 WITH MINOR DWELLING



CLASSIC FACADE



Floor Area HOME/ GRANNY FLAT

Porch	5.8m ² / 3.0m ²	Width	36.65m
Alfresco	34.8m ² / 18.8m ²	Length	14.78m
Garage	41.3m ² / 26.1m ²		
Living	216.7m ² / 81.5m ²	Typical Frontage	39.65m+
TOTAL	(46.07sqs) 428.0m ²	Dimensions shown are for Classic Façade.	