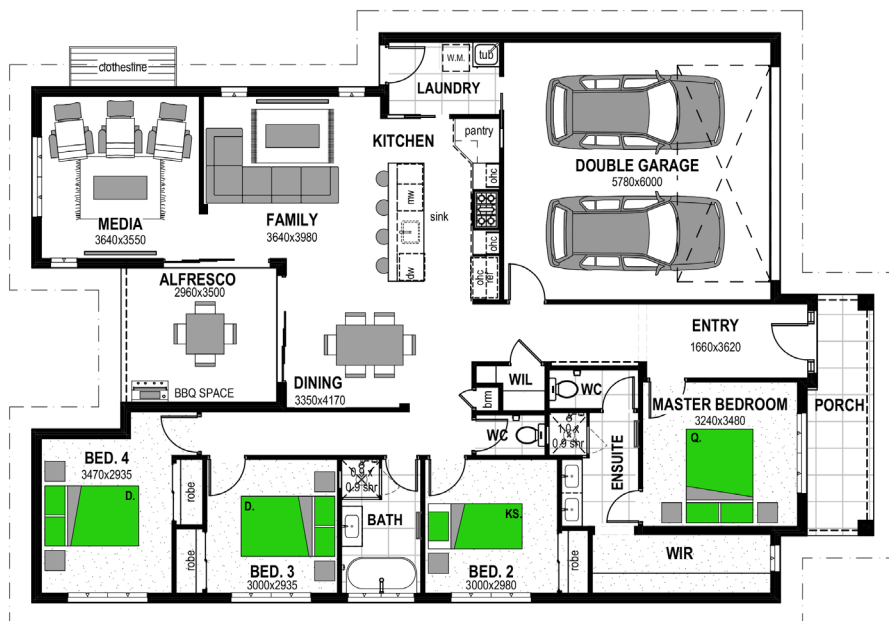




Manuka Façade - Option 1

4 2 2

# Muriwai 210



## Floor Areas

Porch	7.6m <sup>2</sup>
Alfresco	10.5m <sup>2</sup>
Garage	37.2m <sup>2</sup>
Living	153.9m <sup>2</sup>
TOTAL	(22.5sqs) 209.3m <sup>2</sup>
Width	12.8m
Depth	18.9m

Floor plan and dimensions shown are for the Classic Façade.

## Features

- Media
- Walk-In Linen



Hamptons Façade



Portico Façade



Mountain Façade



Classic Façade



Skillion Façade

More Façades available. Speak with our team or see [www.stroudhomes.co.nz](http://www.stroudhomes.co.nz) to see the full range.